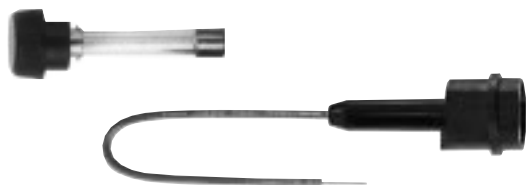


Specialty Fuse

Fast-Acting, Size Rejecting

GLQ & HLQ



Catalog Symbol: GLQ (Fuse) HLQ (Fuseholder)
 Fast-Acting Rejection Style
 Ampere Rating: 1-10 Amperes
 Voltage Rating: 300 Volts AC or less
 Interrupting Rating: 10,000 Amperes
 Agency Information:
 Fuse:
 UL Listed, Std. 248-14, Guide JDYX, File E19180
 CSA Certified, C22.2 No. 248.14, Class 1422-01, File 53787
 Fuseholder:
 UL Recognized, Guide IZLT2, File E14853
 CSA Certified, Class 6225-01, File 47235

General Information:

- Size of GLQ fuse varies with ampere rating.
- GLQ fuses mount in HLQ size rejecting carriers (prevents overfusing).
- Fuse and knob are an integral one-piece unit. There are no replacement knobs (caps).
- HLQ carrier comes with 6" of #18 red insulated solid copper wire attached to the line side.
- Customer inserts a #18 insulated solid copper wire into load side receptacle.
- Units can be panel mounted with a separate steel clip. For the knockout hole (see above), choose #BK/A-104. For the keyhole punch type hole, choose #6374 for panels .043" to .062" thick, or #4909 for panels .030" to .042" thick.
- Do not put tension on line (rear) terminal of fuse-holder.

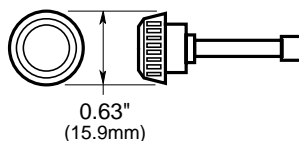
Electrical Ratings for Type GLQ Fuses and Rejection Style Carriers

Fuse	Carrier	Fuse	Carrier
GLQ-1	HLQ-1 $\frac{1}{10}$	GLQ-3	HLQ-3 $\frac{3}{10}$
GLQ-1 $\frac{1}{2}$	HLQ-1 $\frac{1}{10}$	GLQ-4	HLQ-5
GLQ-1 $\frac{3}{10}$	HLQ-1 $\frac{1}{10}$	GLQ-5	HLQ-5
GLQ-2	HLQ-3 $\frac{3}{10}$	GLQ-9	HLQ-10
GLQ-2 $\frac{1}{2}$	HLQ-3 $\frac{3}{10}$	GLQ-10	HLQ-10

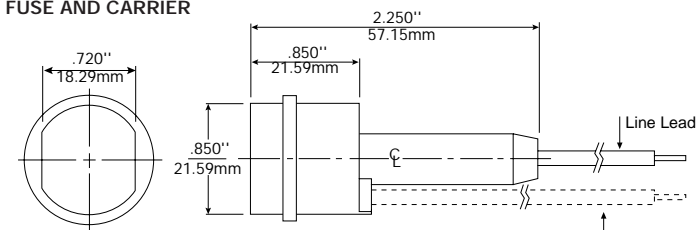
CE logo denotes compliance with European Union Low Voltage Directive (50-1000 Vac, 75-1500 Vdc). Refer to Data Sheet: 8002 or contact Bussmann Application Engineering at 636-527-1270 for more information.

Dimensional Data

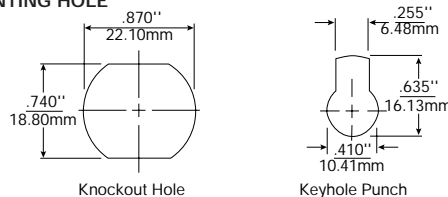
FUSE



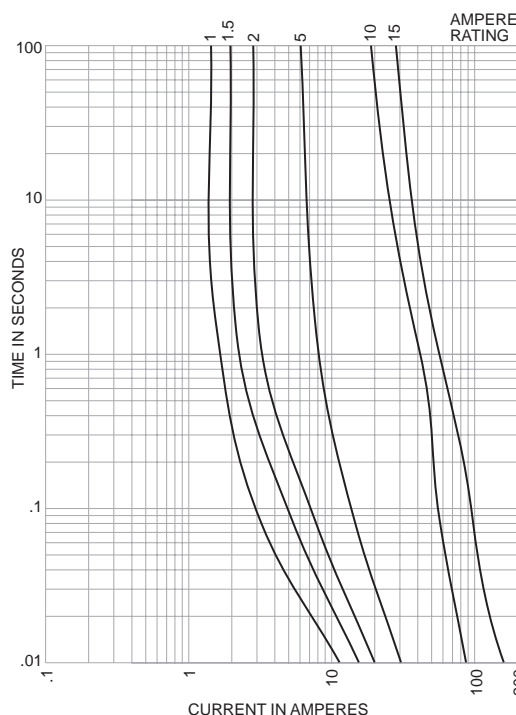
FUSE AND CARRIER



MOUNTING HOLE



Time-Current Characteristic Curves—Average Melt



The only controlled copy of this Data Sheet is the electronic read-only version located on the Bussmann Network Drive. All other copies of this document are by definition uncontrolled. This bulletin is intended to clearly present comprehensive product data and provide technical information that will help the end user with design applications. Bussmann reserves the right, without notice, to change design or construction of any products and to discontinue or limit distribution of any products. Bussmann also reserves the right to change or update, without notice, any technical information contained in this bulletin. Once a product has been selected, it should be tested by the user in all possible applications.